

**LEC**

Trust Relationship Growth

# LZ-1.5ER Electric Motor Refractory Gunning Machine



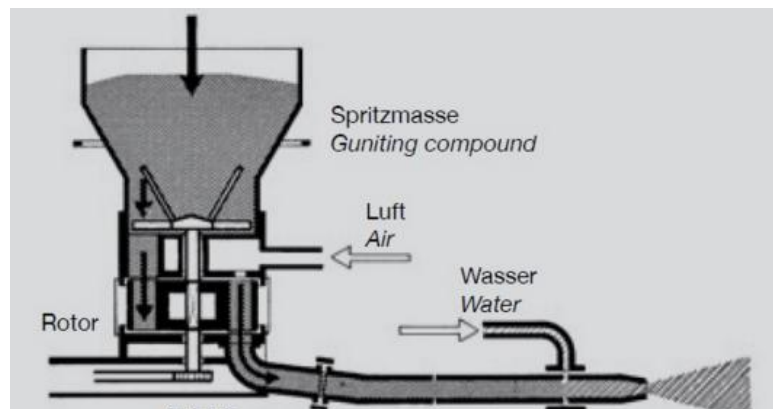
## Description

LZ-1.5ER refractory gunning machine for furnace kiln is specifically designed for refractory dry mix shotcrete applications, as well as for concrete shotcrete application.

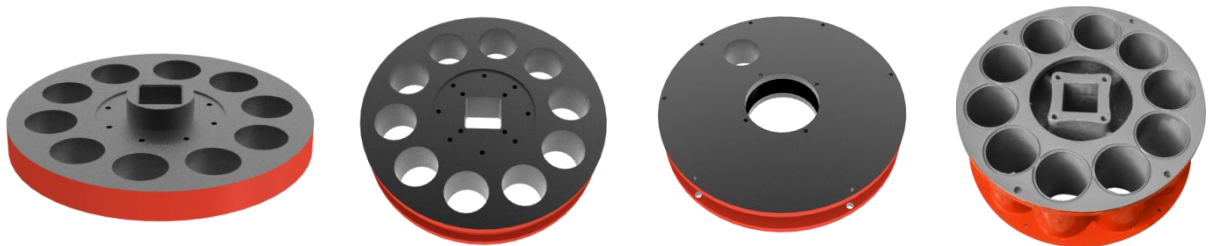
With this LZ-1.5ER, you can get low dust and high performance spraying flow in

## Feature

- ★ LZ-1.5ER refractory gunning machine is straight chamber rotor type refractory gunning machine.



- ★ Rotor system could change different size rotor body, achieve different output capacity from 0.7m<sup>3</sup>/h to 3m<sup>3</sup>/h.



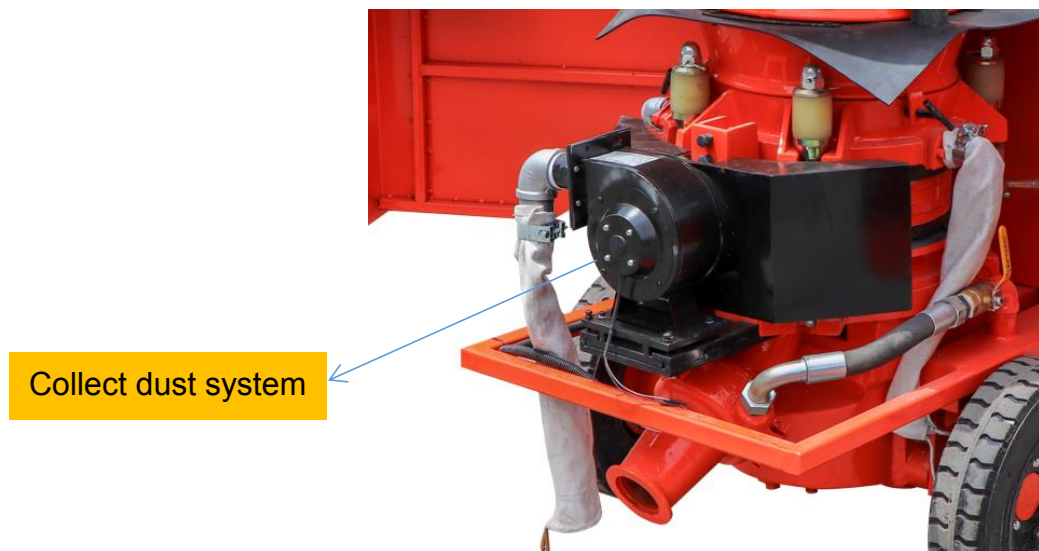
- ★ Variable output with ABB variable-frequency drive.



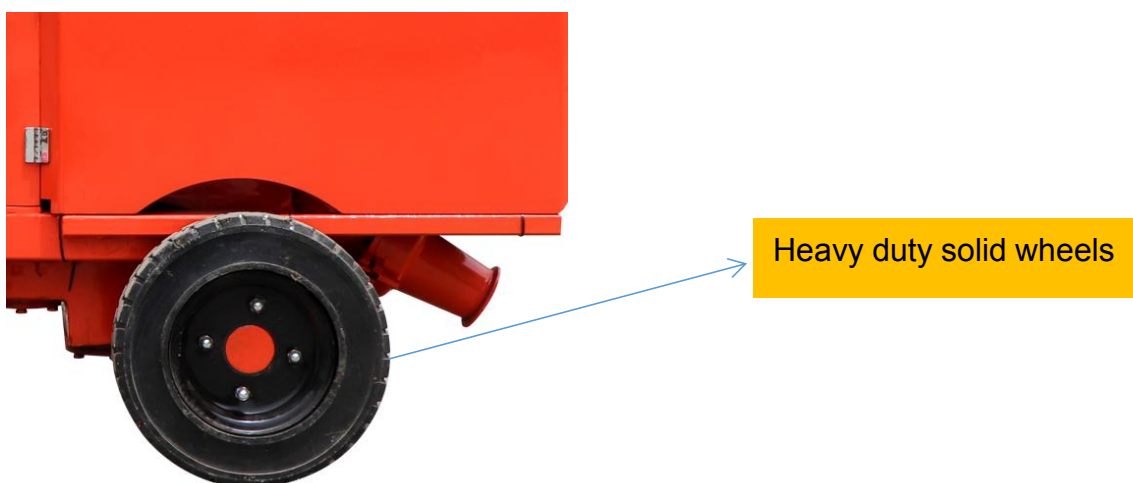
★ Bag Cutter and High Hopper with vibrator.



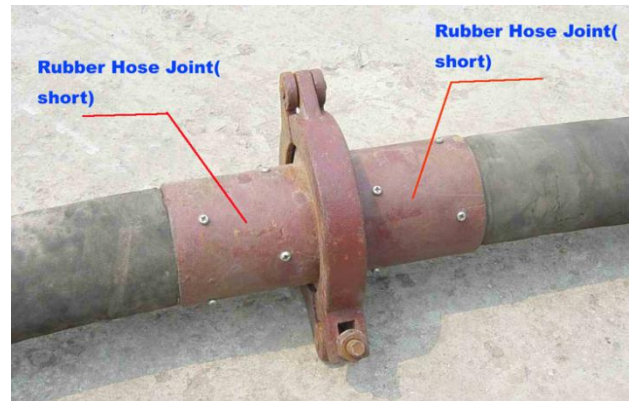
★ Equipped with collect dust system, environmental friendly.



★ Heavy-duty solid wheels, easy to move in harsh conditions.

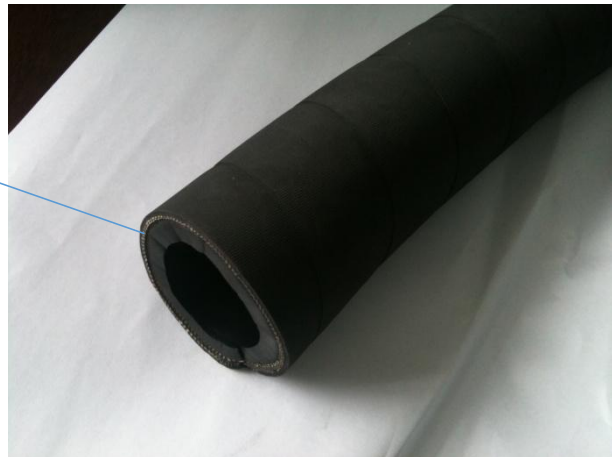


★ Coupling and clamps are optional as below

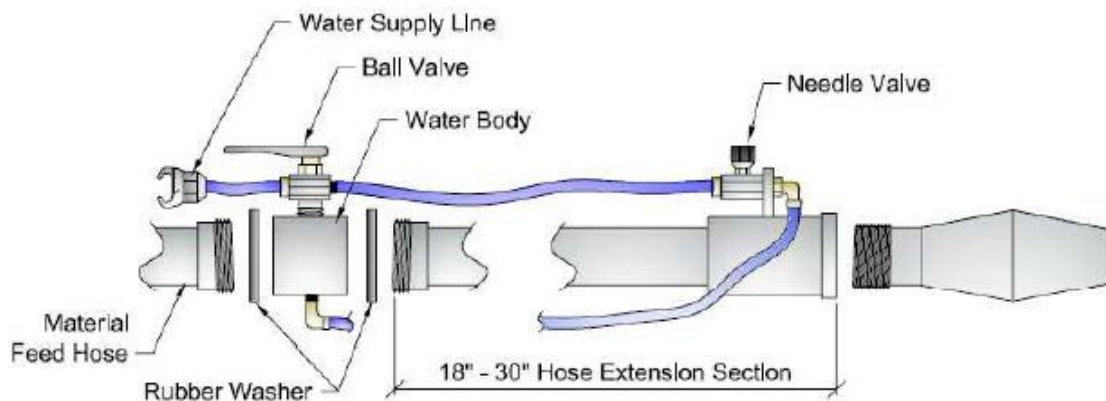


★ Premium Grade Blast hose used as conveying hose

Premium grade blast hose



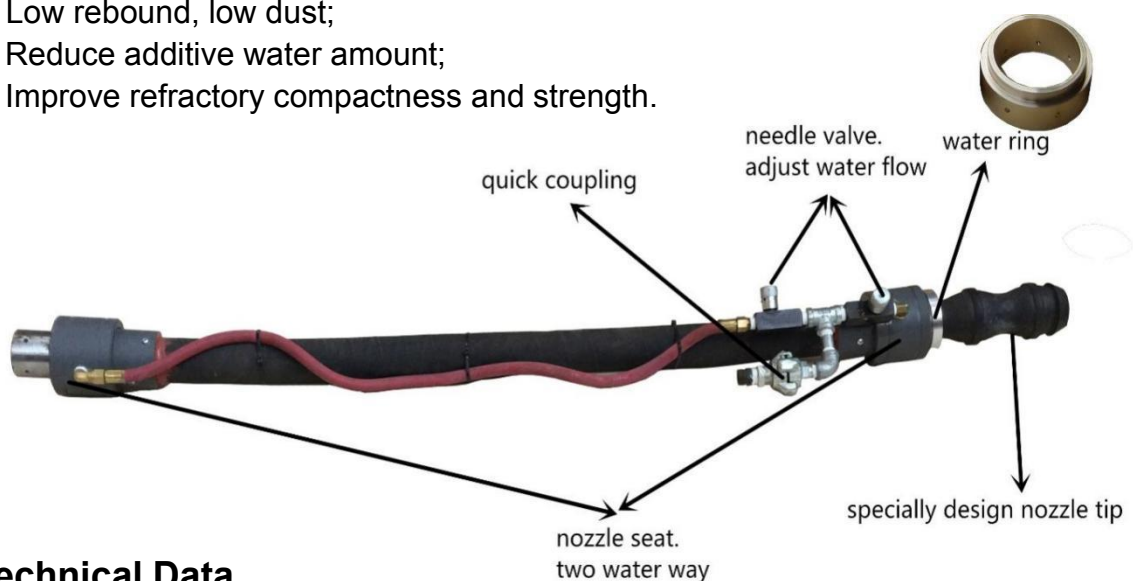
★ Light weight Nozzle for refractory materials and castable





**New!!! Pre-dampening nozzle assy with two water supply ways**

1. Low rebound, low dust;
2. Reduce additive water amount;
3. Improve refractory compactness and strength.



**Technical Data**



Model	LZ-1.5ER
Output Capacity	0.7~3m <sup>3</sup> /h
Max. Aggregate size	10mm
Conveying Pressure	0.2~0.4Mpa (29-58PSI)
Conveying Hose ID	32/38mm
Air Consumption for conveying material	5~6m <sup>3</sup> /min(180-215CFM)
Motor Power	4Kw
Conveying Distance	60m (Vertical)
Conveying Distance	200m (Horizontal)
Material Charging Height	1.16m
Rotor Speed	7r/min, continuous spraying
Weight	660Kg
Overall Dimension	1600×840×1300mm



**Note:** Air motor full pneumatic for option.

## ★ Refractory Gunning Machine working video reference

Youtube Video:

<https://www.youtube.com/watch?v=CbQxBT-JNh4>

[http://v.youku.com/v\\_show/id\\_XNjlyNjE5NzQ4.html](http://v.youku.com/v_show/id_XNjlyNjE5NzQ4.html)

## A complete set of refractory gunning machine



### The standard configuration:

LZ-1.5ER main machine

High pressure water pump

Water hose 50m length

Conveying Hose ID32/38mm 15m length

Pre-dampening nozzle assy