

LZ-3ER/S REFRACTORY GUNNING MACHINE

LZ-3ER/S 耐火材料干喷机

Powerful, Compact and Reliable/结构紧凑、工作可靠

1. Description/描述

LZ-3ER/S Refractory gunning machine is specifically designed for Refractory Dry-mix shotcrete applications, as well as for concrete shotcrete application.

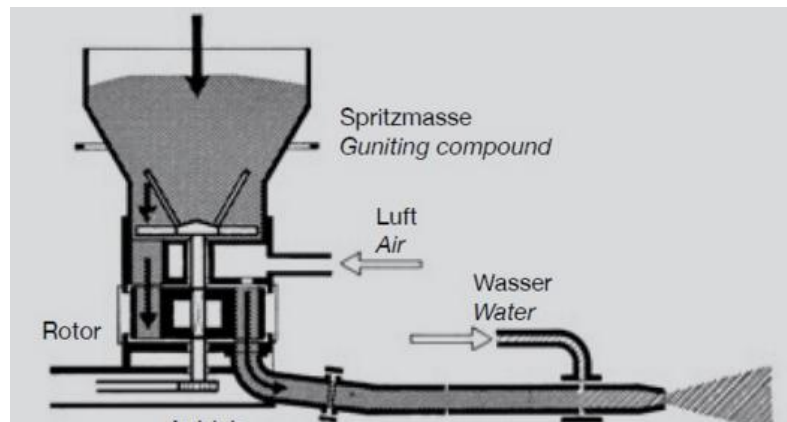
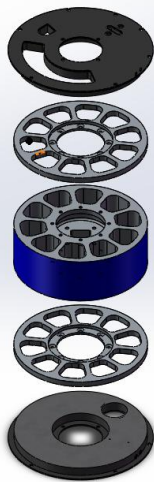
With this LZ-3ER/S Refractory gunning machine, you can get low dust and high performance spraying flow in nozzle. Compared with our market popular LZ-3ER, This LZ-3ER/S is a new version.

LZ-3ER/S 是我司在现有混凝土喷浆机基础上，结合耐火材料干喷应用的特点专门设计的一款耐火材料干喷专用喷涂机。新设计的 LZ-3ER/S 耐火材料干喷机有效的降低了粉尘，大大提高了喷射效果，是耐火材料干喷的理想设备。LZ-3ER/S 是目前我司市场流行款 LZ-3ER 的升级版本。

2. Features/主要技术特点

LZ-3ER/S is straight chamber rotor type refractory gunning machine.

LZ-3ER/S 属于直通料腔转子式耐火材料干喷机。



- ◆ Variable Output with variable-frequency drive/
变频器无级调速



ABB variable-frequency drive (VFD) /ABB



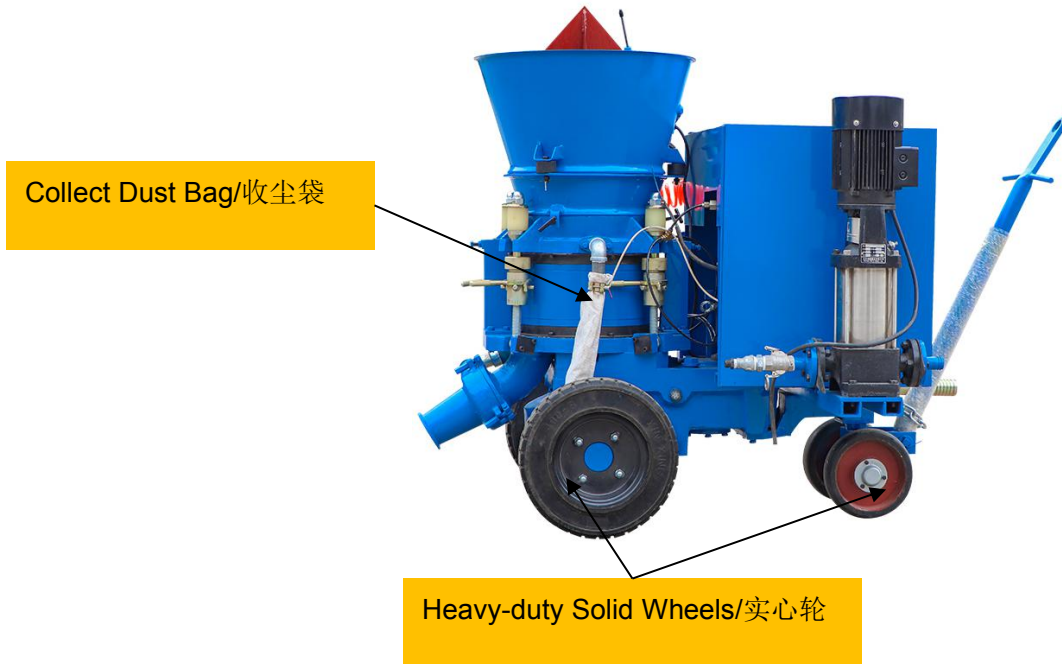
- ◆ Bag Cutter and High Hopper with Vibrator/割包器、高料斗
- ◆ Clean Dust Gun/手持吹尘器
- ◆ Electric Vibrator /振动电机

Clean Dust Gun/手持式吹尘器

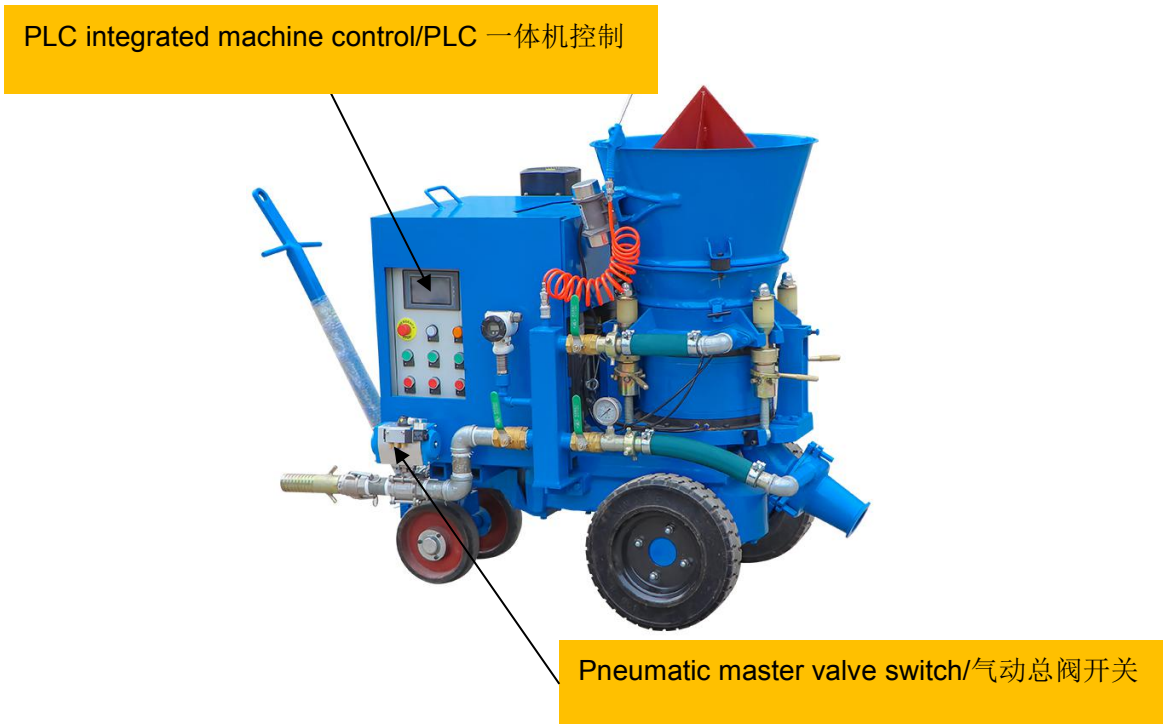
Electric Vibrator /振动电机



- ◆ Collect Dust Bag/收尘袋
- ◆ Heavy-duty Solid Wheels/实心轮

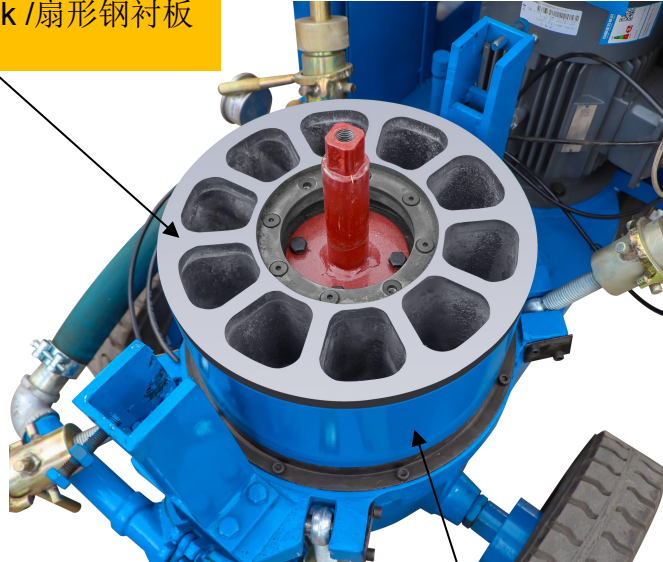


- ◆ PLC integrated machine control/PLC 一体机控制
- ◆ Electric control cabinet cover/电控柜护罩
- ◆ Pneumatic master valve switch/气动总阀开关



- ◆ Sector rigid liner/扇形钢衬板
- ◆ Sector rotor body/扇形转子体

Sector rotor disk /扇形钢衬板



Sector rotor body/扇形转子体

- ◆ Integrated water pump installation/水泵集成
- ◆ Automatic lubrication pump/自动润滑泵

Automatic lubrication pump/自动润滑泵



Lubrication point/润滑点 (4 个)

◆ Intelligent anti-clogging pipe system/智能防堵管系统



◆ Coupling and clamp/快换接头、卡子
The Coupling and Clamp are optional as below
两种接头、卡子可选

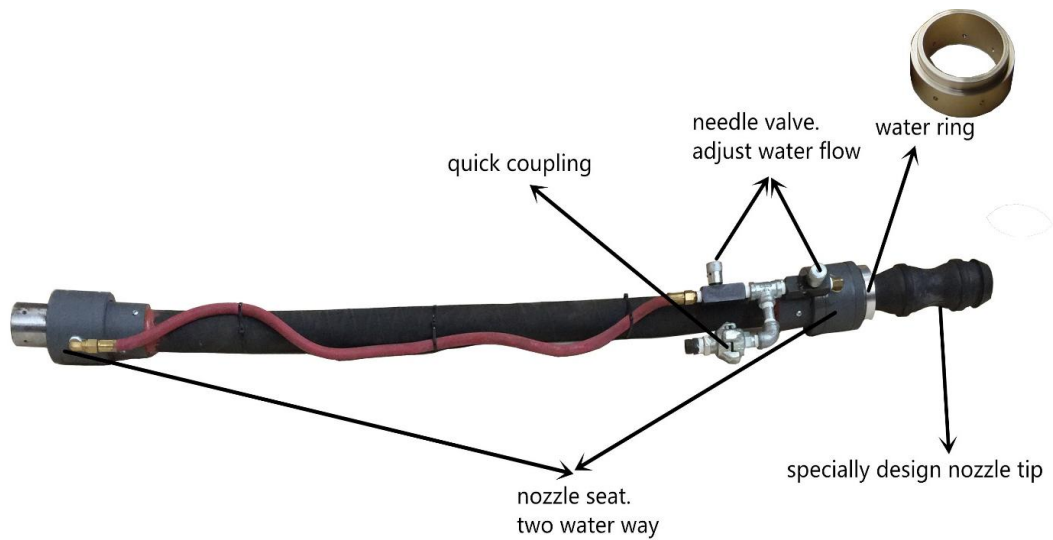


Light weight Nozzle/专用喷头

New!!! Pre-dampening Nozzle!

新品!!! 预湿喷头!

1. Low rebound, low dust. 低反弹，少粉尘。
2. Reduce additive water amount. 减少加水量。
3. Improve refractory compactness and strength. 提高耐火材料的实密度和强度。



LZ-3ER/S refractory gunning machine spraying effect.
LZ-3ER/S 耐火材料喷浆机喷射效果



Blast Rubber Hose/耐磨喷砂管

Premium Grade Blast hose/耐磨喷砂管



High pressure water pump, 7bar pressure make sure to add water fully atomize, mix evenly.

高压水泵，7bar 水压保障加入水充分雾化，混合均匀



3. Technology Sheet/技术参数

| Specification (with Electric motor drive): | | |
|---|--|------------------------------------|
| 1, Automatically to clean delivery line blockage: PLC+VFD+Air Pressure Sensor/由 PLC、变频器、气压传感器组成的自动防堵清除系统 | | |
| 2, Sector hole to replace the circle hole in the rotor to improve the volume of the rotor and to decrease friction area, then with the same output, the rotor speed will be lower to improve the work life of rubber sealing plate and keep the motor power lower. /转子体孔由圆孔改为扇形孔，增加落料容积，减少摩擦面积；同样产量下，可以有效减低转速（提高橡胶密封板的使用寿命），降低功率。 | | |
| 3, The combination of gunning machine and high pressure water, it is easy to move./水泵和干喷机组装到一起，方便机器移动。 | | |
| 4, To add automatic lubricator to the rubber seal plate to make the work life of wear parts longer and make the motor power lower./橡胶密封板带自动润滑，可以延长密封板使用寿命、降低电机功率。 | | |
| Rotor volume/转子容积 | | 6.3L |
| Rotor Speed/转子转速 | | 4-8r/min |
| Max. Output/最大出料量 | | 1.5-3m ³ /h |
| Max. Horizontal Conveying Distance/最大水平输送距离 | | 200m |
| Max. Aggregate Size/最大骨料粒径 | | Φ10 mm |
| Conveying Hose Inner Diameter/输送管内径 | | 38/32mm |
| Operating air Pressure/工作风压 | | 0.2-0.4MPa(29-58PSI) |
| Air Consumption/耗气量 | | 6~7m ³ /min(215-250CFM) |
| Material Charging Height/上料高度 | | 1.1m |
| Rotor Motor /主电机 | Power/功率 | 4kW |
| | Voltage/电压 | 3 phase,380V,50Hz |
| Water pump/高压水泵 | Output/排量:26L/min; Pumping head/扬程:70m; Motor/电机功率:1.5kw | |
| Automatic lubrication/自动润滑系统 | Volume/容积 | 2L |
| | Power/功率 | 24V, 50w |
| Overall Dimension(L×W×H) /外形尺寸 | | 1600×1000×1300mm |
| Weight/重量 | | 665kg |

4. Machine Pictures Gallery/机器照片





Zhengzhou Lead Equipment Co., Ltd.

郑州佰利得机器制造有限公司

Add: Xisihuan Ring-Road East, Tielu, Xiliu lake sub-district, Zhongyuan District, Zhengzhou, Henan

地址: 河南省郑州市中原区西流湖街道办事处西四环东

P.C./邮编: 450042

Web/官网: www.leadcrete.net

Email/邮箱: sales1@leadcrete.com

TEL./电话: +86-371-63902781, 55019537

FAX/传真: +86-371-63526676