

LBHPP15/55X2-30D Hydraulic Power Unit for Sale



◆ **Product Description:**

LBHPP15/55X2-30D Hydraulic Power Unit for Sale is an all hydraulic pumping station driven by diesel engine. LBHPP15/55X2-30D Hydraulic Power Unit for Sale is equipped with cooling system, filtration system, pressure regulating system, pressure and temperature indication and valve control. It is mainly used for pumping and grouting of mud and other mud mixtures to provide power. The product is compact, easy to operate and does not take up space.

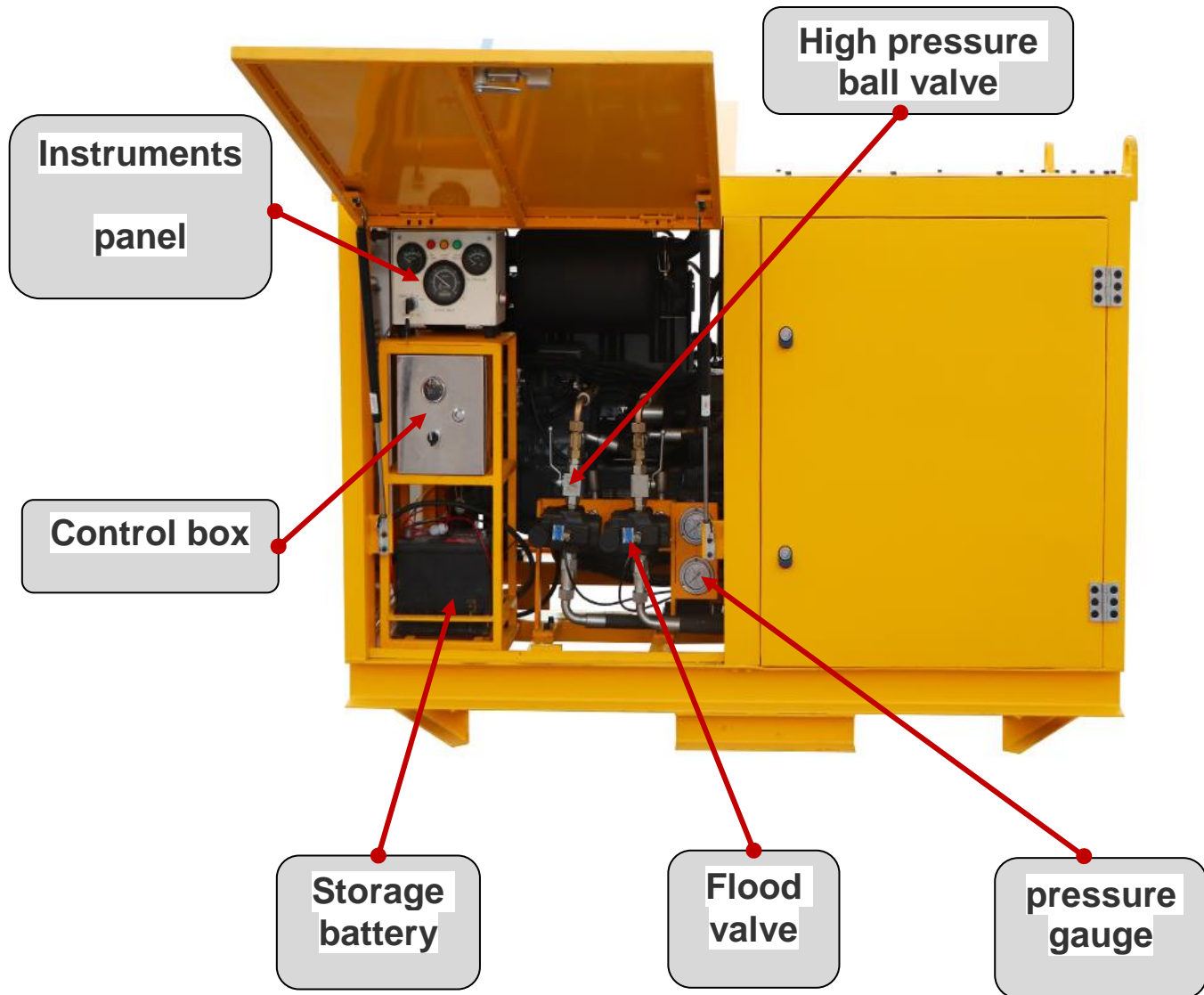
◆ **Product Feature**

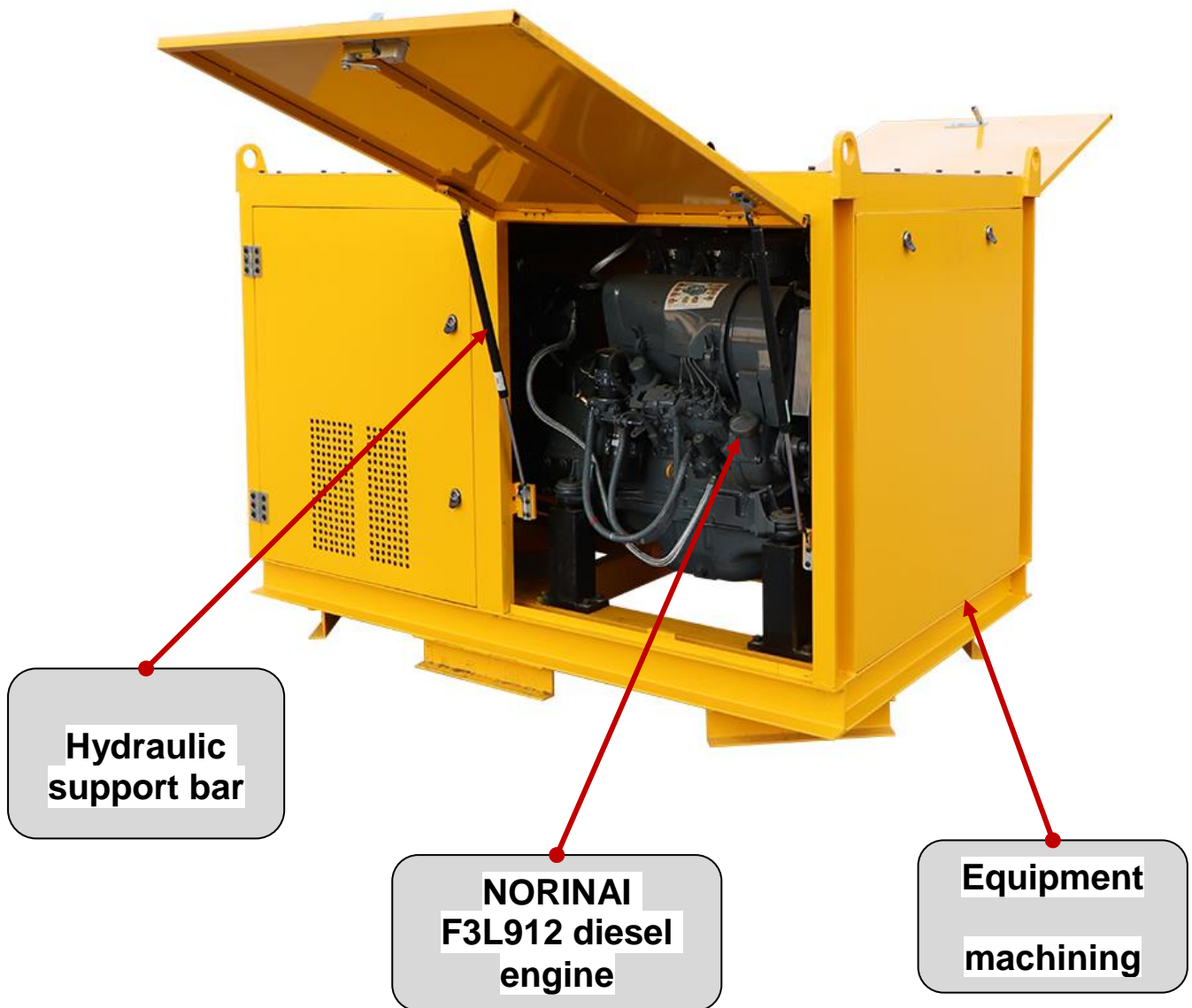
1. Compact size, simple structure, easy to operate and maintain;
2. Few spare parts and low maintenance cost;
3. The motor has overload protection function. The hydraulic system has oil temperature overheat protection;
4. Diesel engine driven, suitable for construction site where power supply cannot be met. The motor has an overload protection function. Hydraulic system with oil temperature overheating protection.

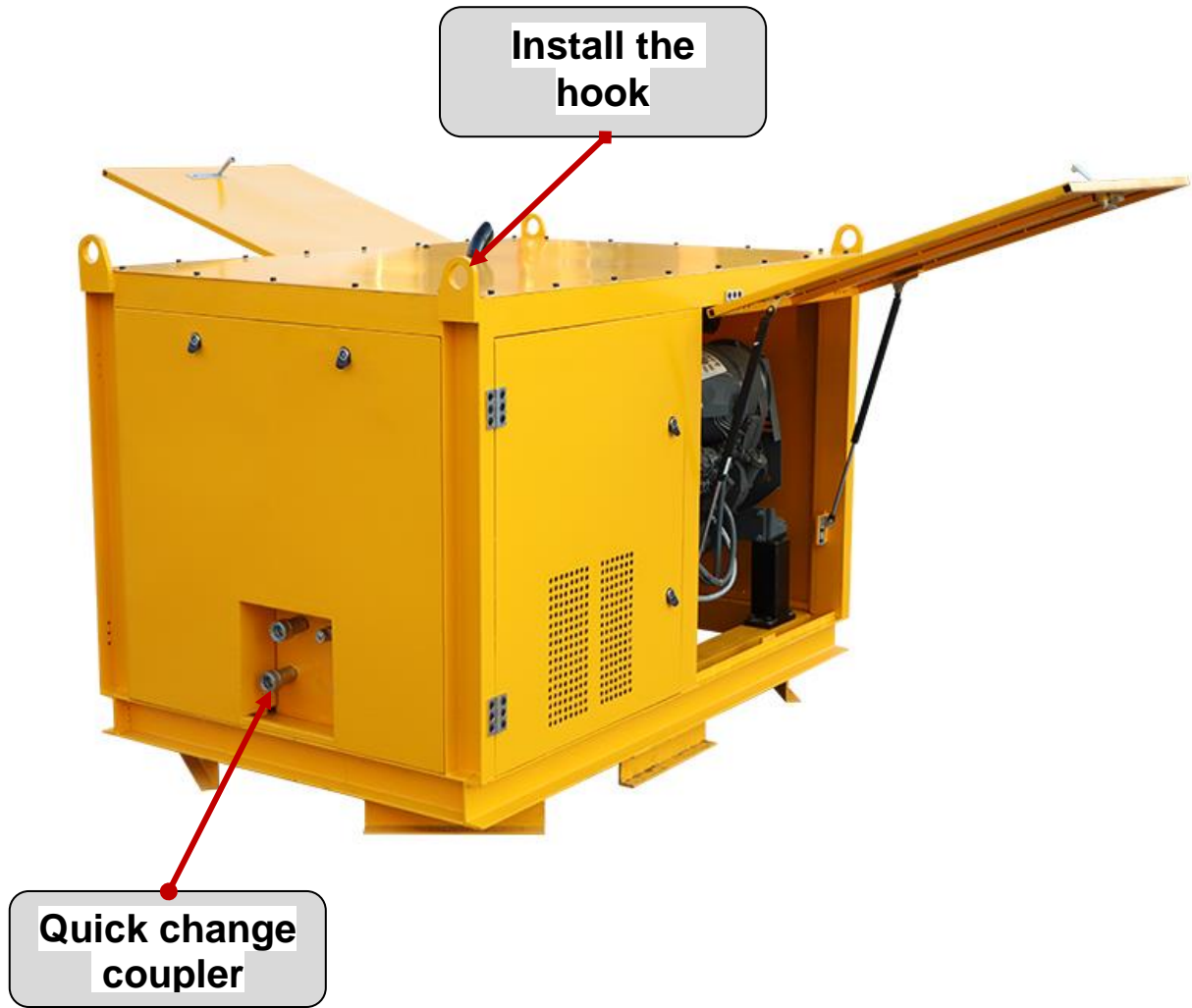
◆ **Product Specification**

Description	Parameter
Type	LBHPP15/55X2-30D
Pump displacement	32ml/r
Export discharge	0-57.6L/min
Hydraulic system pressure	15MPa
Outlet pressure	15MPa
Diesel power	29KW
Dimensions	1760X1150X1300mm
Weight	960kg

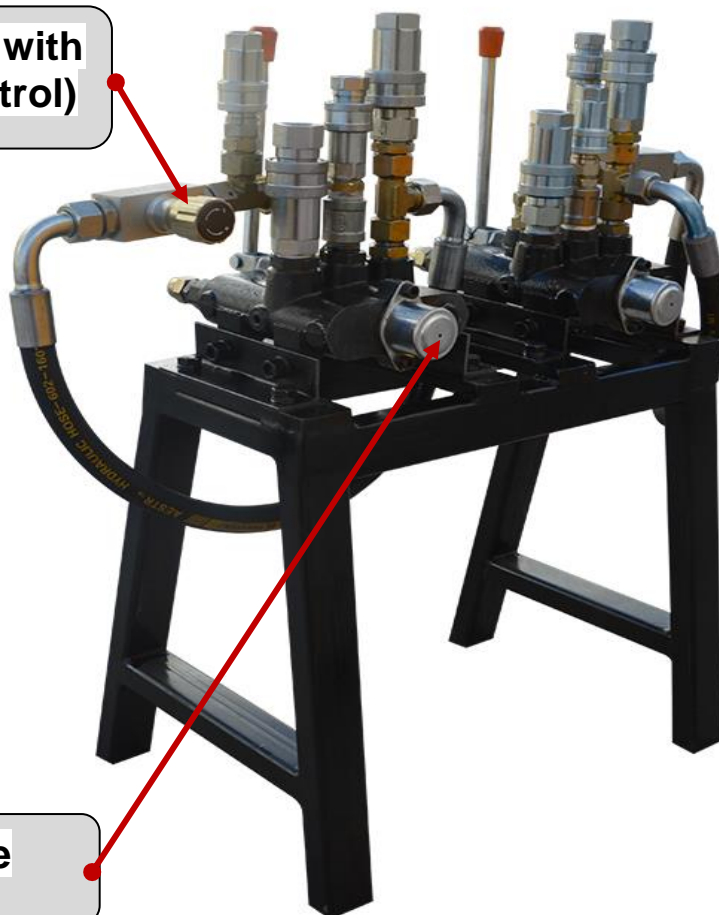
◆ Detail Part



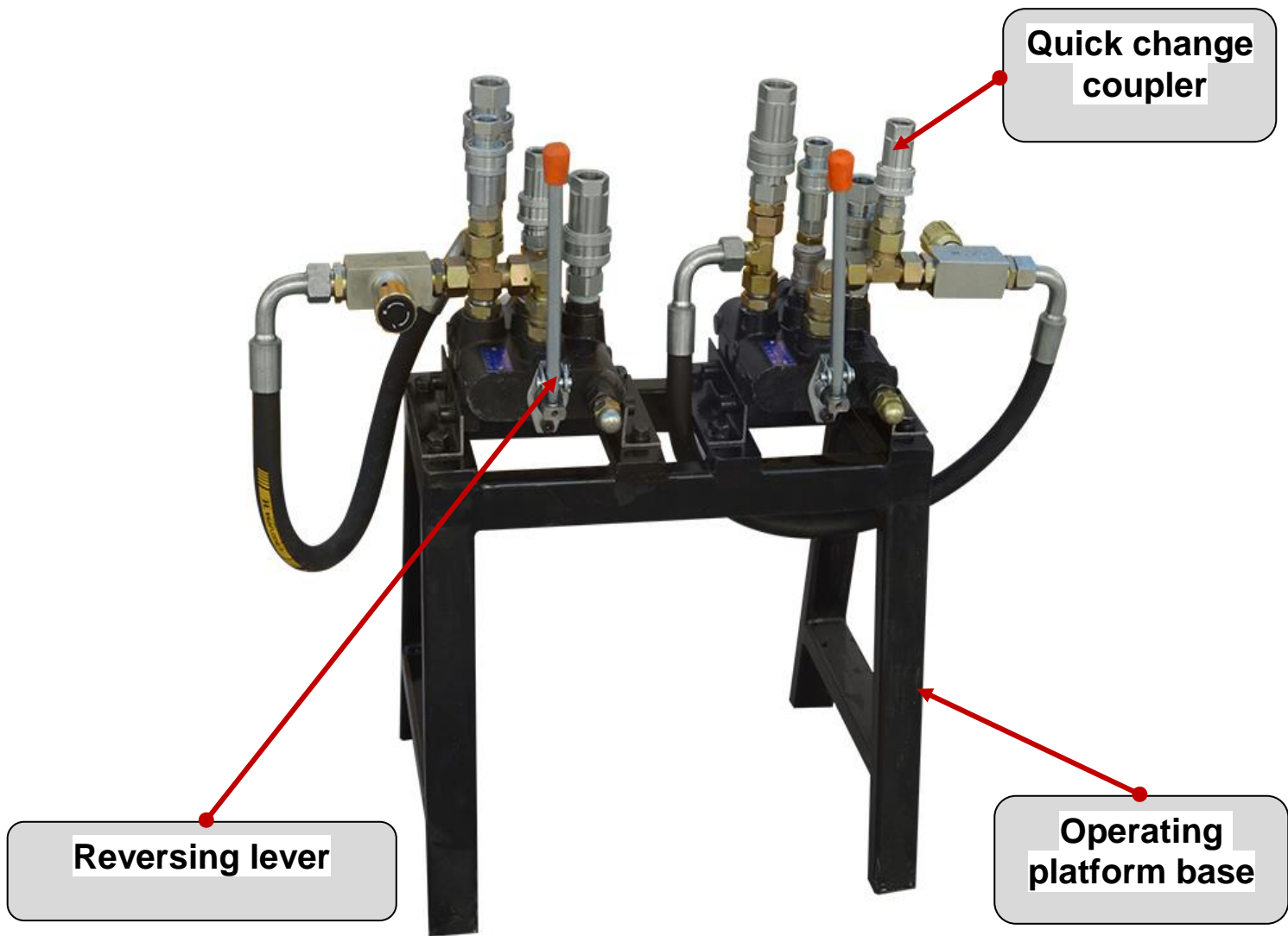




**Adjustable output with
this valve (LS control)**



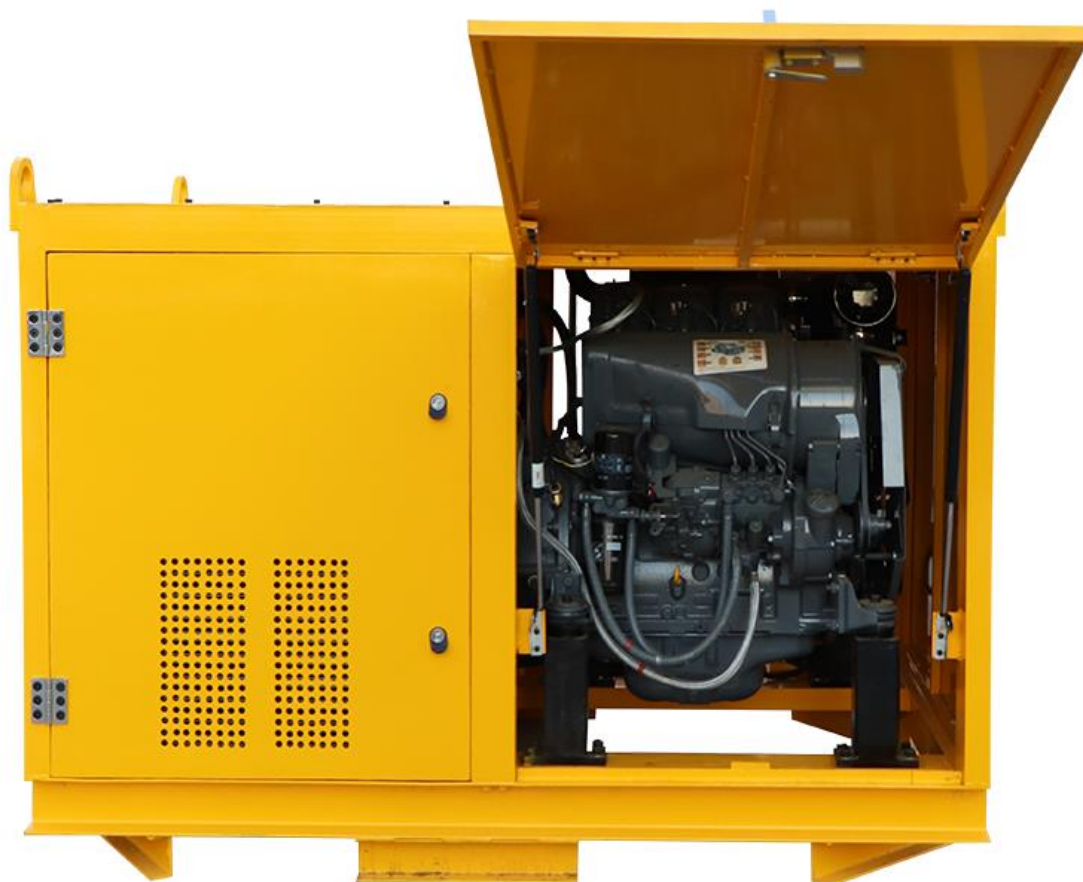
Multiplex valve



◆ Other Angle Pictures







Zhengzhou Lead Equipment Co., Ltd.

Add: Xisihuan Ring-Road East, Tielu, Xiliu lake sub-district,
Zhongyuan District, Zhengzhou, Henan

Web: <https://www.leadcrete.com>

E-Mail: sales@leadcrete.com

TEL.: +86-371-63902781

FAX: +86-371-63526676