

LHS0883Hydroseeder for sale

LHS0883Hydroseeder for sale is a spray-on water-based mixture of grass seed, wood fiber and fertilizer. It is often used to grow grass on steep slopes to help prevent soil erosion.

The process of hydroseeding involves fiber mulch, fertilizer, water, seed and sometimes lime being mixed together inside a tank, and then applied directly over a prepared ground, using a spray hose.

Once the lawn area is thoroughly sprayed, the moist fiber mulch then works to produce a bond with the soil, and also gives the seeds a water-retaining layer to defend them against the sunlight, erosion and wind.

Feature:

1. Factory directly supplyhydroseeder.
2. Good after-sales service.
3. Supplyspare parts timely.
4. Best hydroseedermanufacturer in China.
5. We have professional sales team and experienced workers.
6. Competitive price according to good raw material purchasing ability,and high work efficiency.

The key words: hydroseeder,hydroseeder for sale,hydro seeder for sale,hydroseeding machine for sale,grass seed spraying machine for sale

The apppication:

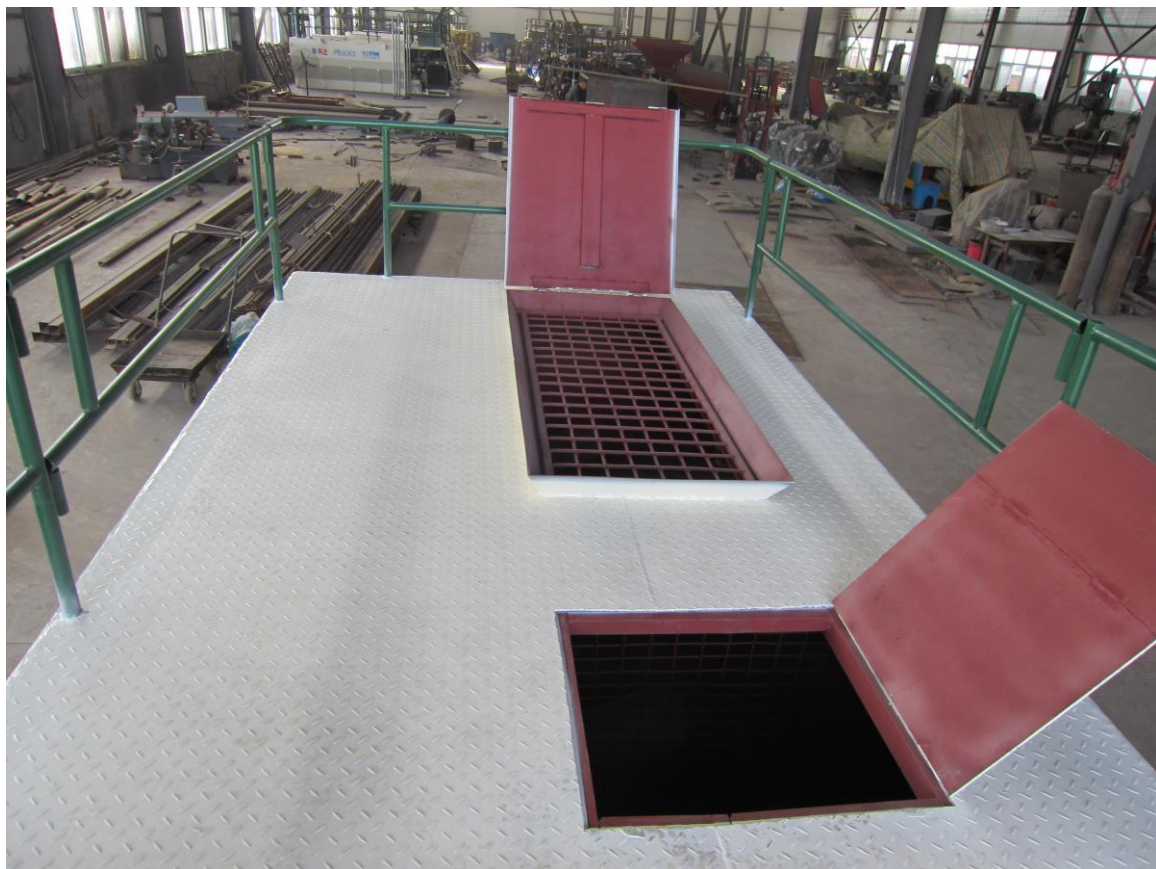
Hydro seeder for sale is used for stable soil slope, high fill subgrade solpe, artificial soil slope, lawn, rice field, garden, golf courses, park, school, soil improvenment and the place of erosion control.

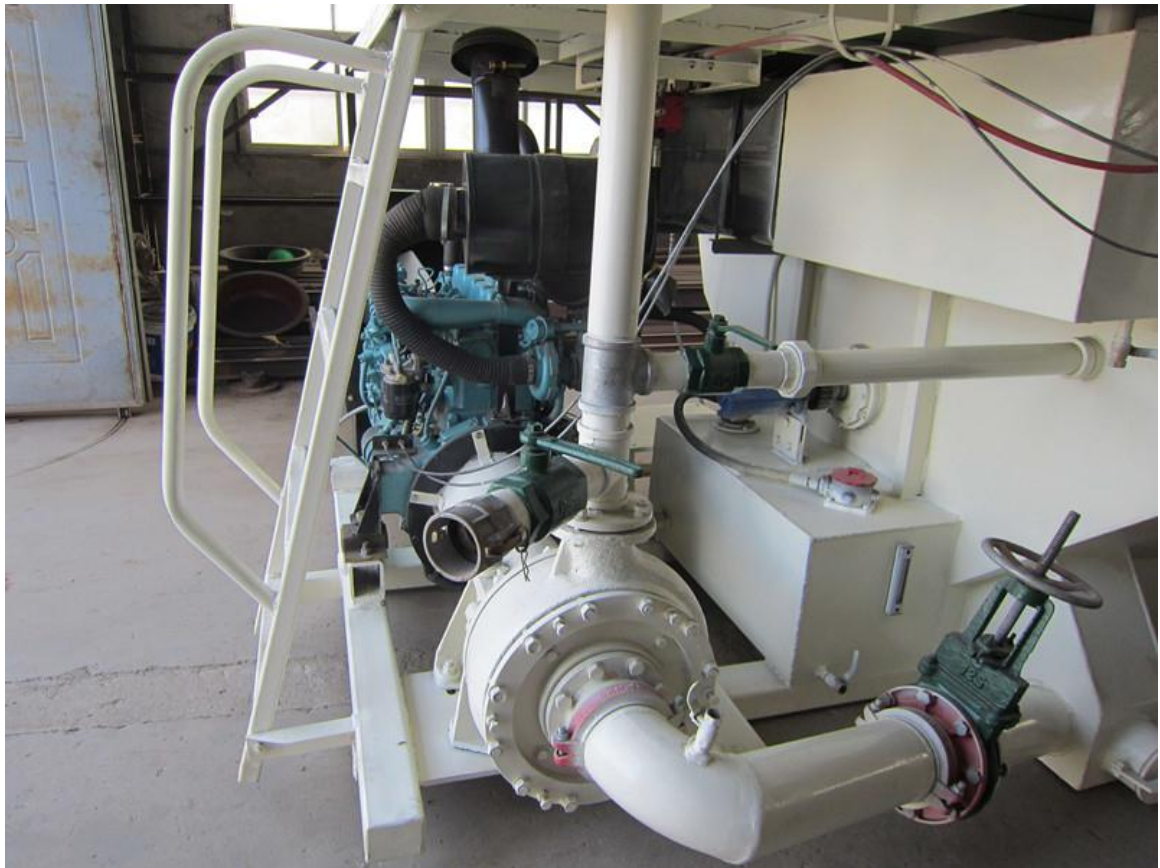
LHS0883hydroseeding machine for sale will keep you busy earning profits with numerous applications, including:

- Seeding
- Watering
- Fertilizing
- Street Cleaning
- Dust Control
- Pipeline Restore Erosion Control
- Hydro Sprigging
- Fire Suppression
- Reclamation
- Landfill Covering
- Coastal Work

Pictures









Test the Hydroseeder:



Delivery the Hydroseeder:



Application of Hydroseeder:



Our Hydroseeder work in South Africa:



郑州佰利得机器制造有限公司

Zhengzhou Lead Equipment Co., Ltd.

Xisihuan Ring-road East , Tielu Village, Xushui Town, Zhongyuan,
Zhengzhou, Henan, China (Mainland)

P.C. 450053

Tel: 86-371-55951210

Skype: machine.machine6

Email: sales@leadcrete.com

Website: www.leadcrete.net