

LMP7/35 Portable Concrete Pump

Description

LMP7/35 Portable Concrete Pump designed for masonry grouting and shotcrete applications. It features up to 7.5 cubic meters per hour production output. This product is a new, multi-purpose, multi-purpose industrial pump developed by absorbing advanced technology from abroad. Typical applications include: masonry block filling, wall grouting, hoisting mortar for masonry wall construction; concrete sidewalk and patio slab pumping; low-volume shotcrete.

LMP7/35 Portable Concrete Pump



Features:

- 7.5 m³ per Hour
- Production Rate
- S tube valve
- Self-Propelled
- Equipped Wireless Remote
- Electric Powered Version

Technical parameters:

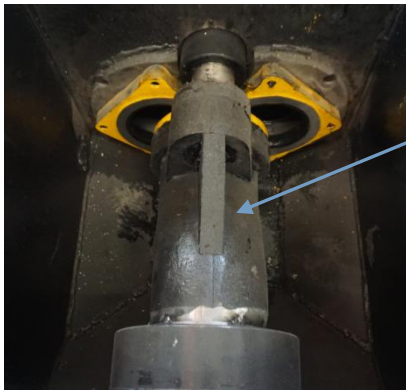
Name	Mini Masonry concrete pump
Model	LMP7/35
Output	7.5m ³ /h
Pumping Pressure	35bar
Max. Aggregate Size	15mm
Cylinder diameter	∅120mm
Cylinder Stroke	360mm
Conveying Hose Inner Diameter	∅80mm
Main Motor Power	15Kw
Max. Vertical Conveying Distance	30m
Max. Horizontal Conveying Distance	90m
Overall Dimension	1950*700*1130mm
Weight	750kg
Note: the machine can be equipped with electric walking device according to customer demands.	



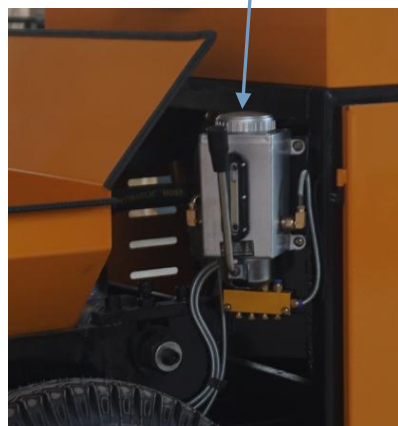
**Cemented Carbide Wear Plate/Ring
(more than 10000 m2)**



Swing tube valve



Solid Tyre



Automatic lubricating oil



Air cooling system

LMP7/35 Portable Concrete Pump Benefits



Polyether material piston



The foot brake



The electric switch



**Self-Propelled
Electric walking device**



Hard chrome cylinder



LMP7/35 Portable Concrete Pump is the most durable, compact, efficient and versatile swing-tube engineered concrete grout pump available on the market today.



Application:

- Concrete/bridge repair
- Machine base stabilization
- Masonry block fill
- Mining
- Piling encasements
- Pressure grouting
- Refractory
- Shotcrete
- Slabjack/mudjack lifting
- Soil stabilization
- Void fill

A complete set of LMP7/35 Portable Concrete Pump



NO.	Description	Qty.	Unit
1	Main machine	1	set
2	Convey hose ϕ 80*10m	1	pc
3	Reducer pipe ϕ 100- ϕ 80	1	pc
4	Steel pipe ϕ 80	1	pc
5	Elbow pipe ϕ 80	1	pc
6	Discharge pipe	1	pc
7	Clamp ϕ 100	1	pc
8	Clamp ϕ 80	2	pc





郑州佰利得机器制造有限公司

Zhengzhou Lead Equipment Co., Ltd.

地址 ADD: 郑州市中原区西流湖街道办事处铁炉村西四环东 邮编 P.C.:450042
Xisihuan Ring-Road East, Tielu, Xiliu lake sub-district,
Zhongyuan District, Zhengzhou, Henan

网址 (Web): <http://www.leadcrete.com> E-Mail: sales@leadcrete.com

电话 TEL: +86-371-63902781 传真 FAX: +86-371-63526676

Zhengzhou Lead Equipment Co., Ltd.

Add: Xisihuan Ring-Road East, Tielu, Xiliu lake sub-district,
Zhongyuan District, Zhengzhou, Henan

Web: <http://www.leadcrete.com> E-Mail: sales@leadcrete.com

TEL: +86-371-63902781 FAX: +86-371-63526676